



DATAMINE

Datamine Discover Release 2017

**MAXIMIZE
THE VALUE OF
YOUR MINE**

Image GeoTagging

Digital imagery is now an essential geoscience dataset. Discover users can seamlessly geo-locate imagery as a point file using the new GeoTagging tool.

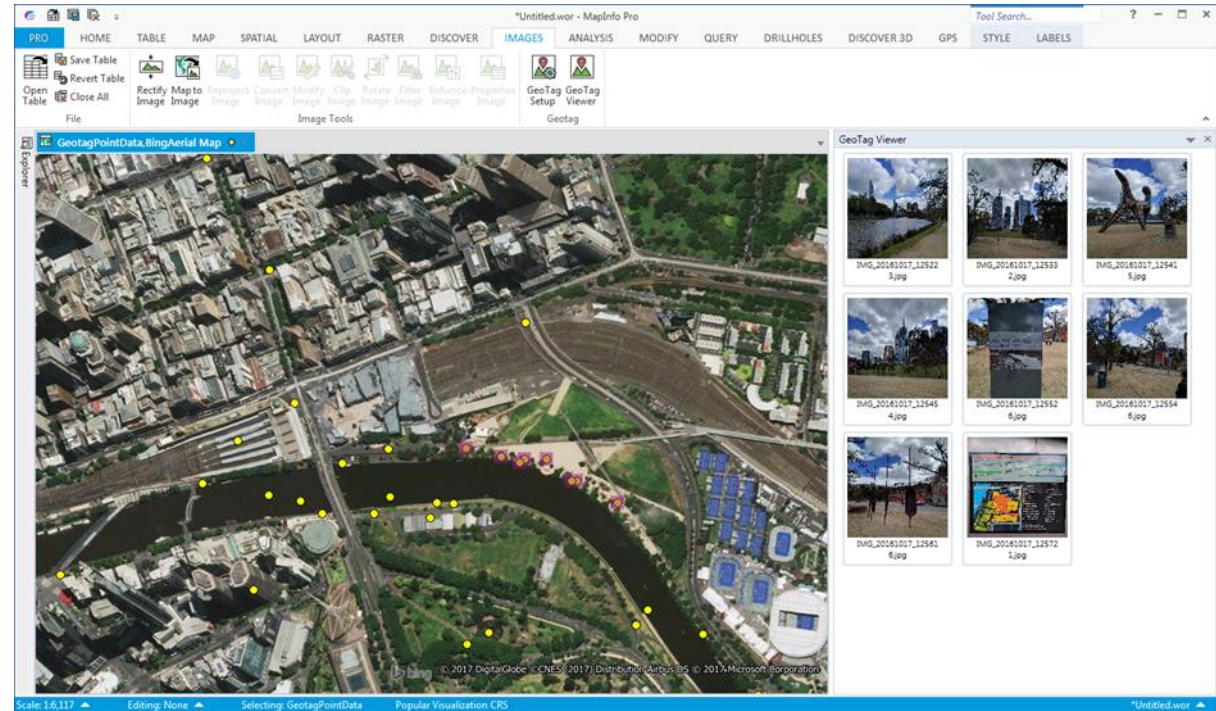
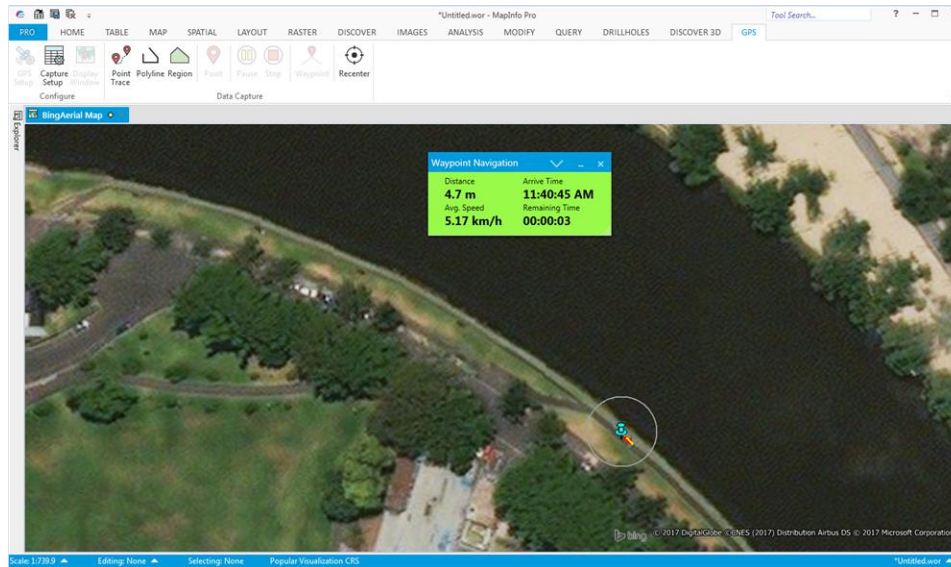


Image GeoTagging

- The GeoTagging tool allows the user to read and create points in Discover from the EXIF metadata contained in the image. This information is recorded from a camera/smartphone with an embedded GPS.
- The user can easily display single or multiple images by selecting point objects from the map window. To further assist the user the bearing the image was captured is displayed as a orientated arrow in the map window.
- The GeoTag Viewer tool is integrated with the Single Record data entry tool for ease of viewing and entering attribute data

GPS Improvements -Waypoint Navigation



- It's 2017 and most field geoscientists will still go into the field with paper maps and a handheld GPS.
- Discover now has GPS functionality embedded for use on portable laptops and tablet devices.

GPS Improvements -Waypoint Navigation

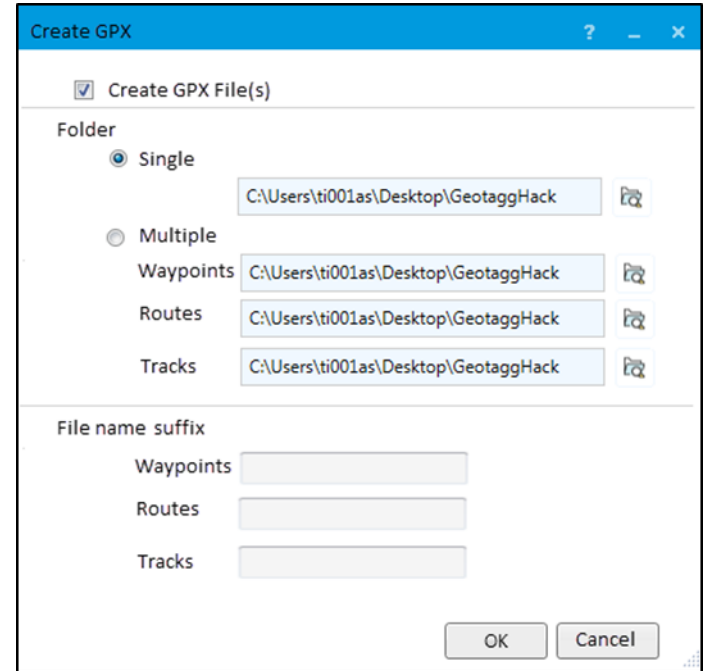
- The Waypoint Navigator allows the user to engage with GPS functionality on a portable device.
- The user can select a location they want to go to by typing or selecting a point on a map. The user can then observe the distance, arrival time, remaining time to target and current speed.
- The map window displays the current direction of travel, a tangent line to the waypoint and a user defined buffer zone alert around the target point.

GPX Import and Export

If a user needs to import or export data to and from a GPS device, this tool can make the data transition much easier.

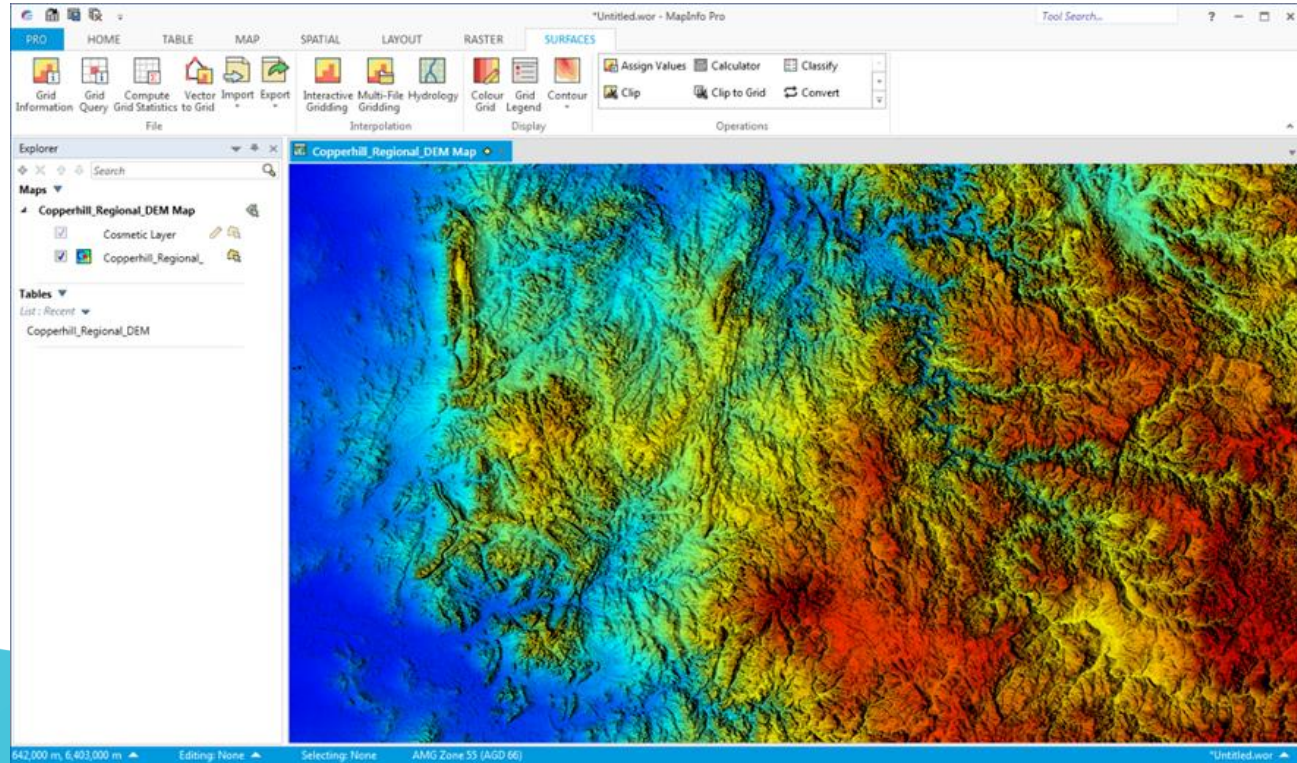
Greater support of importing and exporting GPX files between Discover and an external GPS is a feature of this tool.

Easily transfer waypoint, route and track data between GPS compliant devices with GPX files.



Surfaces Module Reintegration (From 32-Bit Discover)

Integration of the Discover Surfaces module from the 32 Bit Discover version into the latest 64 Bit Ribbon.



Drillhole Enhancements

Point Table Support

Gives the user the ability load point data into their Drillhole project without any manual manipulation of the source tables. If you only have one field defining the downhole recording depth such as with structural or geophysical LAS datasets this is now fully supported.

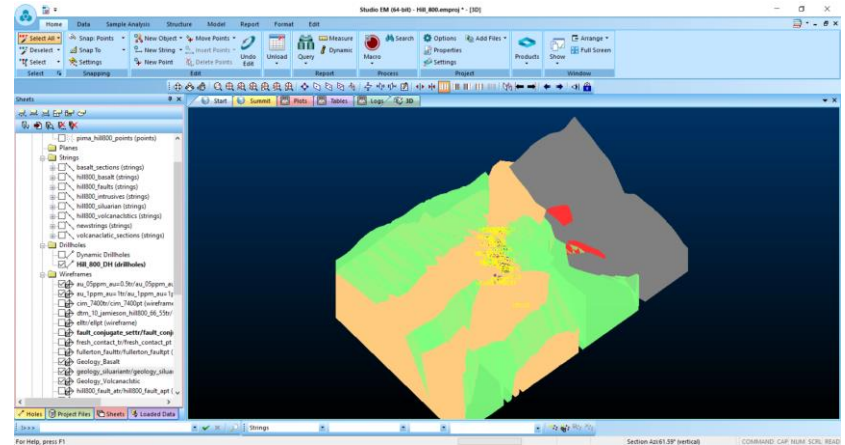
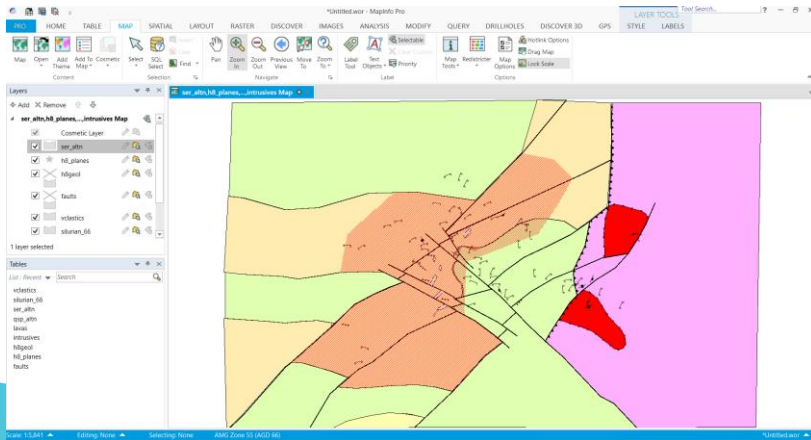
Multicolumn Downhole Table Support

Multicolumn downhole table support, allows the user to have their downhole tables with individual column assignments. No longer do you need to massage your datasets to have the same field structure and position saving you time and effort previously experienced.

Discover/Studio Integration

Workspace Exporter

Improvements to the Map Window to Datamine Studio exporter, with an automated fix of column widths to ensure a smoother transition of the data with the ability to select fields to export.



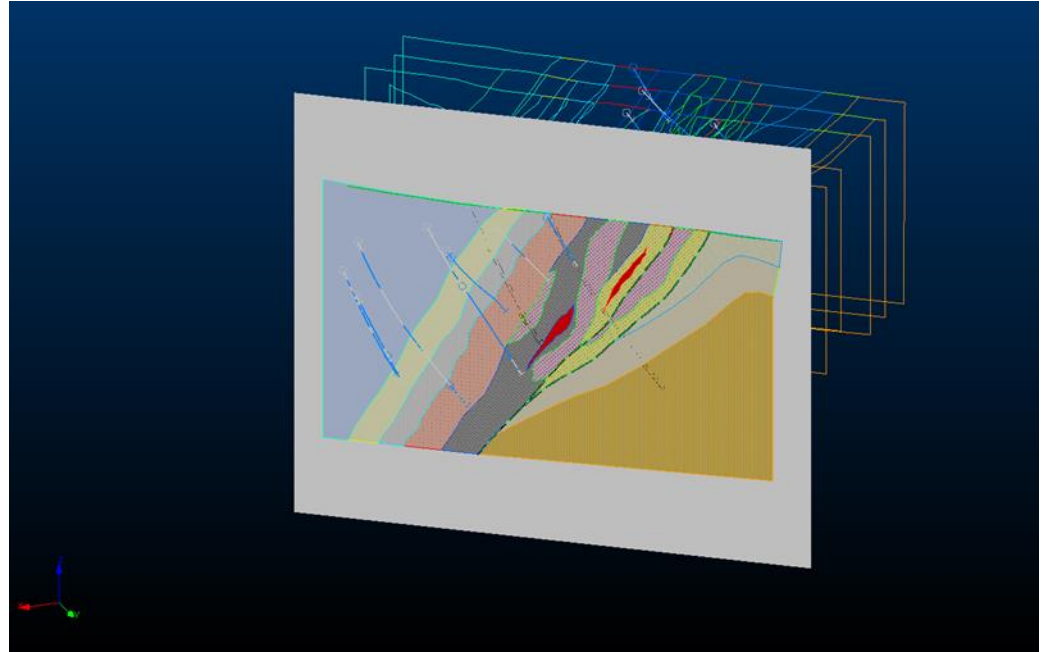
Discover/Studio Integration - Drillhole Exporter

Section Layer Export

Export Mapinfo Pro polyline and polygon objects from a Discover Drillhole section layer into a Datamine Studio section.

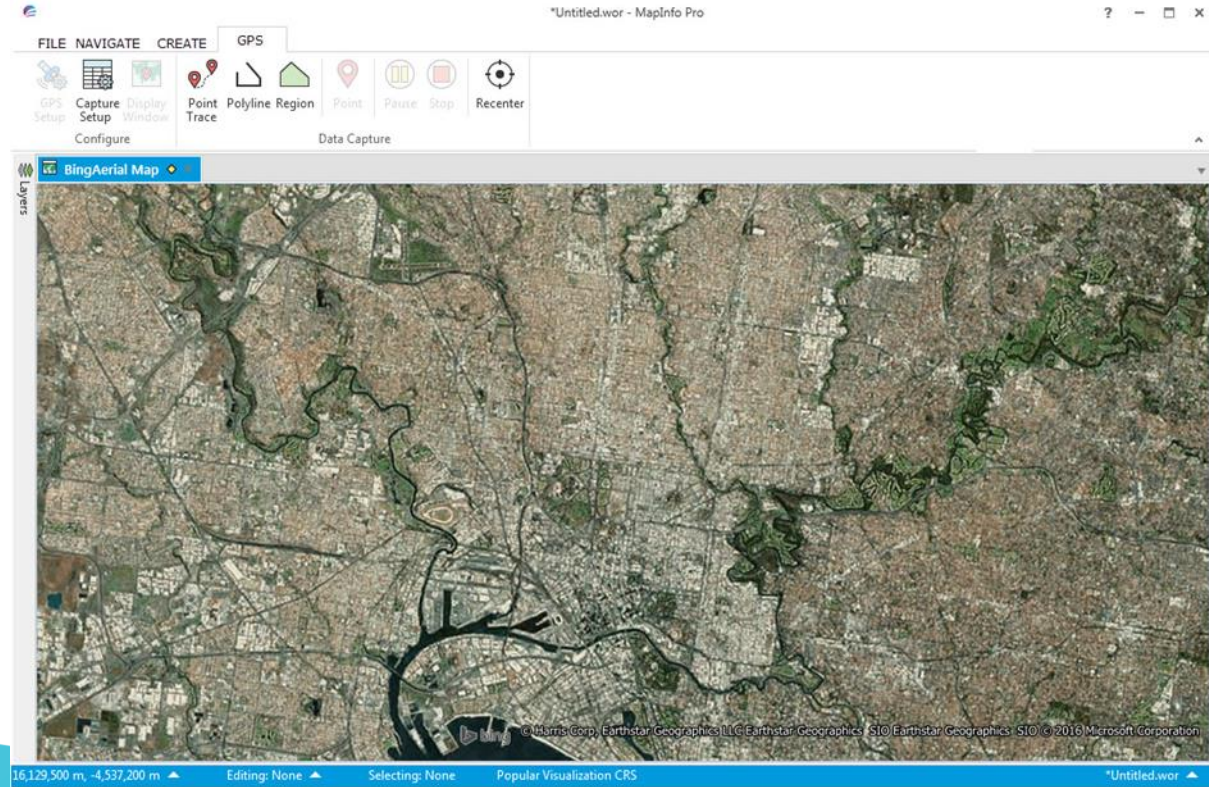
Section Image Export

Export a georeferenced image from a Discover Drillhole section into Datamine Studio.



Menu Customisation - Tablet Version

A new templated tablet menu for ease of use of Discover in the field on a tablet device (Windows OS only)



Data Entry

Strike Support for structural symbols

Previously a user could only enter structural information with dip and dip direction assignments; strike support allows the user to enter strike and dip using the standard right-hand rule convention.

Digitising structure from a line feature

A user can now digitise a structure symbol from a Mapinfo Pro line or polyline object, previously this could only be done using a point object.

Single Record Entry

Now supports Structural Symbols for easy digitising record by record.

Datamine Discover 3D

Location Navigator

- Navigate around the 3D display by typing in a co-ordinate value, making the task of navigating to a specified location much easier.
- Numerous Usability and Bug Fixes.